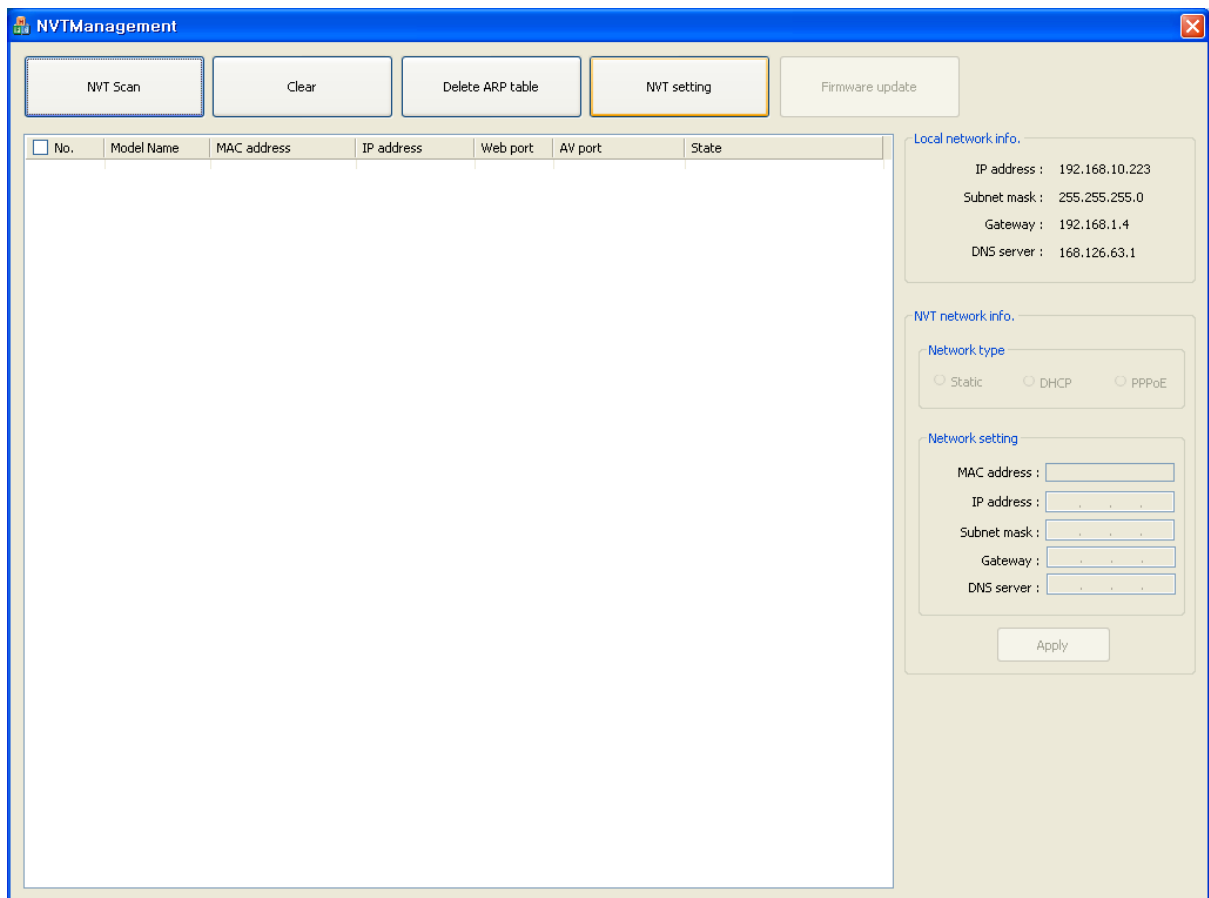


# NVTManagement

ver. 1.0.0.1

## 개요

- 실행하려면 NVTManagement.exe를 더블클릭 합니다.
- 1. 로컬 네트워크에 연결된 NVT(Network Video Transmitter) 검색
- 2. 선택된 NVT 네트워크 설정 정보 변경



< NVTManagement – 초기 실행 화면 >

## 버튼

- “NVT Scan” 버튼: 로컬 네트워크에 연결된 NVT를 검색합니다.
- “Clear” 버튼: 검색한 NVT 리스트를 삭제합니다.
- “Delete ARP table” 버튼: PC가 관리하는 MAC, IP 주소 테이블 정보를 삭제합니다.  
(NVT의 네트워크 정보 변경 후 PC의 MAC, IP 주소 관리 테이블을 갱신이 필요한 경우 사용합니다.)
- “NVT setting” 버튼: 선택된 NVT에 대해 일괄적으로 네트워크 설정 정보를 변경합니다.

## 1. NVT 검색

- “NVT Scan” 버튼: 로컬 네트워크에 연결된 NVT를 검색합니다.
- “Clear” 버튼: 검색한 NVT 항목들을 삭제합니다.
- 정렬 기능: Model Name, MAC address, IP address, Web port, A/V port 탭을 클릭합니다.

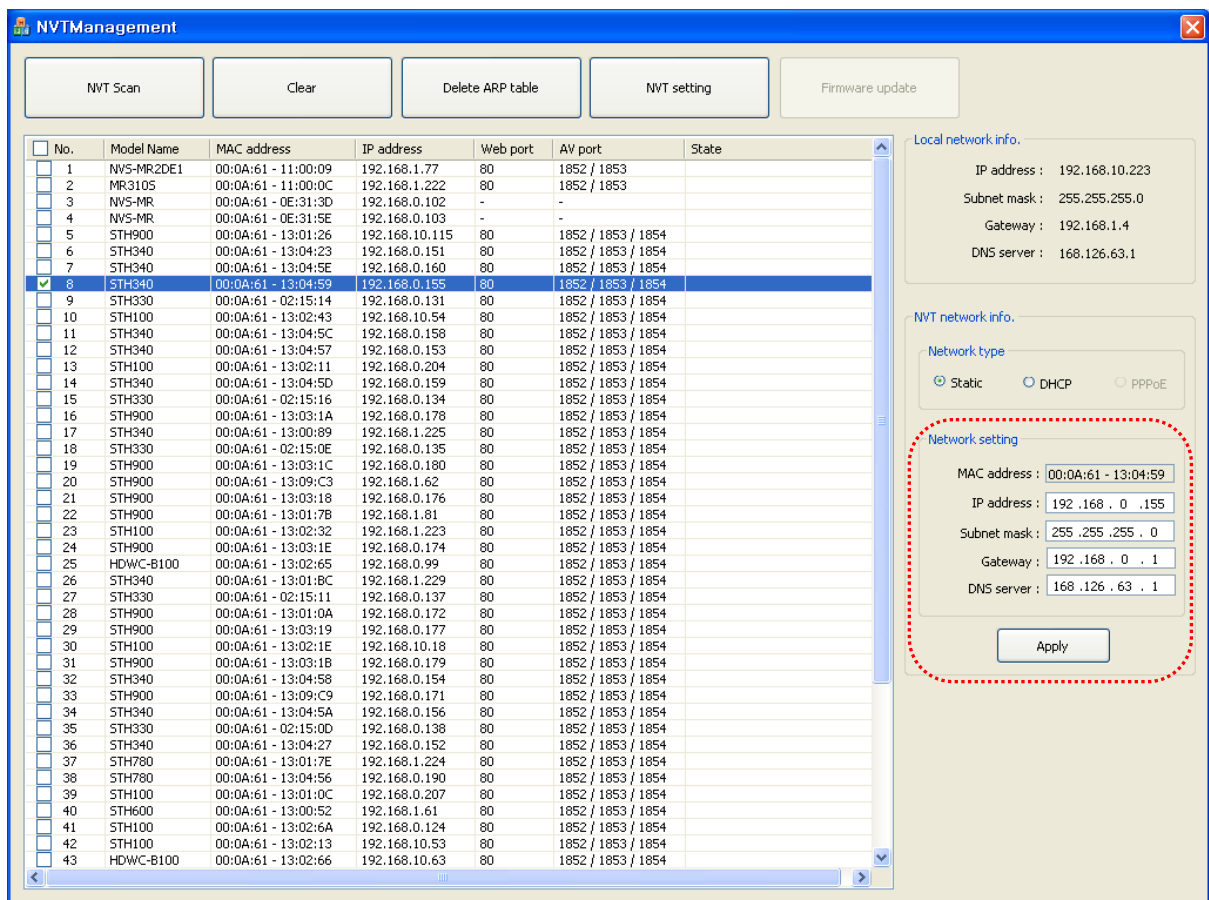
The screenshot displays the NVTManagement web interface. At the top, there are five buttons: "NVT Scan", "Clear", "Delete ARP table", "NVT setting", and "Firmware update". Below these is a table with the following columns: No., Model Name, MAC address, IP address, Web port, AV port, and State. The table contains 43 rows of data, including models like NV5-MR2DE1, MR3105, NV5-MR, STH900, STH340, STH100, HDWC-B100, and HDWC-B100. To the right of the table, there are two sections: "Local network info." and "NVT network info.". The "Local network info." section shows IP address: 192.168.10.223, Subnet mask: 255.255.255.0, Gateway: 192.168.1.4, and DNS server: 168.126.63.1. The "NVT network info." section has a "Network type" section with radio buttons for Static, DHCP, and PPPoE. Below that is a "Network setting" section with input fields for MAC address, IP address, Subnet mask, Gateway, and DNS server, followed by an "Apply" button.

No.	Model Name	MAC address	IP address	Web port	AV port	State
1	NV5-MR2DE1	00:0A:61 - 11:00:09	192.168.1.77	80	1852 / 1853	
2	MR3105	00:0A:61 - 11:00:0C	192.168.1.222	80	1852 / 1853	
3	NV5-MR	00:0A:61 - 0E:31:3D	192.168.0.102	-	-	
4	NV5-MR	00:0A:61 - 0E:31:5E	192.168.0.103	-	-	
5	STH900	00:0A:61 - 13:01:26	192.168.10.115	80	1852 / 1853 / 1854	
6	STH340	00:0A:61 - 13:04:23	192.168.0.151	80	1852 / 1853 / 1854	
7	STH340	00:0A:61 - 13:04:5E	192.168.0.160	80	1852 / 1853 / 1854	
8	STH340	00:0A:61 - 13:04:59	192.168.0.155	80	1852 / 1853 / 1854	
9	STH330	00:0A:61 - 02:15:14	192.168.0.131	80	1852 / 1853 / 1854	
10	STH100	00:0A:61 - 13:02:43	192.168.10.54	80	1852 / 1853 / 1854	
11	STH340	00:0A:61 - 13:04:5C	192.168.0.158	80	1852 / 1853 / 1854	
12	STH340	00:0A:61 - 13:04:57	192.168.0.153	80	1852 / 1853 / 1854	
13	STH100	00:0A:61 - 13:02:11	192.168.0.204	80	1852 / 1853 / 1854	
14	STH340	00:0A:61 - 13:04:5D	192.168.0.159	80	1852 / 1853 / 1854	
15	STH330	00:0A:61 - 02:15:16	192.168.0.134	80	1852 / 1853 / 1854	
16	STH900	00:0A:61 - 13:03:1A	192.168.0.178	80	1852 / 1853 / 1854	
17	STH340	00:0A:61 - 13:00:89	192.168.1.225	80	1852 / 1853 / 1854	
18	STH330	00:0A:61 - 02:15:0E	192.168.0.135	80	1852 / 1853 / 1854	
19	STH900	00:0A:61 - 13:03:1C	192.168.0.180	80	1852 / 1853 / 1854	
20	STH900	00:0A:61 - 13:09:C3	192.168.1.62	80	1852 / 1853 / 1854	
21	STH900	00:0A:61 - 13:03:18	192.168.0.176	80	1852 / 1853 / 1854	
22	STH900	00:0A:61 - 13:01:7B	192.168.1.81	80	1852 / 1853 / 1854	
23	STH100	00:0A:61 - 13:02:32	192.168.1.223	80	1852 / 1853 / 1854	
24	STH900	00:0A:61 - 13:03:1E	192.168.0.174	80	1852 / 1853 / 1854	
25	HDWC-B100	00:0A:61 - 13:02:65	192.168.0.99	80	1852 / 1853 / 1854	
26	STH340	00:0A:61 - 13:01:BC	192.168.1.229	80	1852 / 1853 / 1854	
27	STH330	00:0A:61 - 02:15:11	192.168.0.137	80	1852 / 1853 / 1854	
28	STH900	00:0A:61 - 13:01:0A	192.168.0.172	80	1852 / 1853 / 1854	
29	STH900	00:0A:61 - 13:03:19	192.168.0.177	80	1852 / 1853 / 1854	
30	STH100	00:0A:61 - 13:02:1E	192.168.10.18	80	1852 / 1853 / 1854	
31	STH900	00:0A:61 - 13:03:1B	192.168.0.179	80	1852 / 1853 / 1854	
32	STH340	00:0A:61 - 13:04:58	192.168.0.154	80	1852 / 1853 / 1854	
33	STH900	00:0A:61 - 13:09:C9	192.168.0.171	80	1852 / 1853 / 1854	
34	STH340	00:0A:61 - 13:04:5A	192.168.0.156	80	1852 / 1853 / 1854	
35	STH330	00:0A:61 - 02:15:0D	192.168.0.138	80	1852 / 1853 / 1854	
36	STH340	00:0A:61 - 13:04:27	192.168.0.152	80	1852 / 1853 / 1854	
37	STH780	00:0A:61 - 13:01:7E	192.168.1.224	80	1852 / 1853 / 1854	
38	STH780	00:0A:61 - 13:04:56	192.168.0.190	80	1852 / 1853 / 1854	
39	STH100	00:0A:61 - 13:01:0C	192.168.0.207	80	1852 / 1853 / 1854	
40	STH600	00:0A:61 - 13:00:52	192.168.1.61	80	1852 / 1853 / 1854	
41	STH100	00:0A:61 - 13:02:6A	192.168.0.124	80	1852 / 1853 / 1854	
42	STH100	00:0A:61 - 13:02:13	192.168.10.53	80	1852 / 1853 / 1854	
43	HDWC-B100	00:0A:61 - 13:02:66	192.168.10.63	80	1852 / 1853 / 1854	

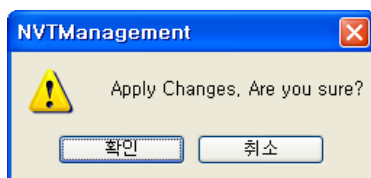
< NVTManagement – 검색 >

## 2. NVT 네트워크 설정 정보 변경

- NVT 선택: 검색된 NVT 중 하나를 클릭합니다.
- 정보 변경: 네트워크 설정 정보 창에서 관련 정보를 변경합니다. (붉은 점선 영역 참고)
- "Apply" 버튼: 정보 변경 후 클릭합니다.
- 확인 대화 상자에서 "확인" 버튼을 클릭하고 인증 대화 상자에서 "아이디", "비밀번호"를 입력합니다. (초기 값: root / pass)



< NVTManagement - NVT 선택 >



< 확인 대화 상자 - 네트워크 설정 정보 변경 >

**Authentication**

User ID :

Password :

OK Cancel

< 인증 대화 상자 - 네트워크 설정 정보 변경 >

**NVTManagement**

NVT Scan Clear Delete ARP table NVT setting Firmware update

No.	Model Name	MAC address	IP address	Web port	AV port	State
1	HDWC-B100	00:0A:61-13:02:66	192.168.10.63	80	1852 / 1853 / 1854	
2	STH100	00:0A:61-13:02:43	192.168.10.54	80	1852 / 1853 / 1854	
3	STH100	00:0A:61-13:02:13	192.168.10.53	80	1852 / 1853 / 1854	
4	MR310	00:0A:61-0E:54:84	192.168.10.253	80	1852 / 1853 / 1854	
5	STH100	00:0A:61-13:02:1E	192.168.10.18	80	1852 / 1853 / 1854	
6	STH900	00:0A:61-13:01:26	192.168.10.115	80	1852 / 1853 / 1854	
7	MR780	00:0A:61-11:00:2F	192.168.1.86	80	1852 / 1853	
8	MR9005	00:0A:61-0E:0E:4F	192.168.1.83	80	1852 / 1853	
9	STH900	00:0A:61-13:01:7B	192.168.1.81	80	1852 / 1853 / 1854	
10	NVS-MR2DE1	00:0A:61-11:00:09	192.168.1.77	80	1852 / 1853	
11	STH900	00:0A:61-13:09:C3	192.168.1.62	80	1852 / 1853 / 1854	
12	STH600	00:0A:61-13:00:52	192.168.1.61	80	1852 / 1853 / 1854	
13	MRH100	00:0A:61-0E:21:88	192.168.1.58	80	1852 / 1853 / 1854	
14	HSDC-101NH	00:0A:61-0E:5F:6A	192.168.1.57	80	1852 / 1853 / 1854	
15	NVS-MRDE1	00:0A:61-12:12:8A	192.168.1.39	80	1852 / 1853	
16	STH340	00:0A:61-13:01:8C	192.168.1.229	80	1852 / 1853 / 1854	
17	HSDC-101NH	00:0A:61-0E:22:76	192.168.1.228	88	8852 / 8853 / 1854	
18	STH330	00:0A:61-02:15:19	192.168.1.226	86	6852 / 6853 / 1854	
19	STH340	00:0A:61-13:00:89	192.168.1.225	80	1852 / 1853 / 1854	
20	STH780	00:0A:61-13:01:7E	192.168.1.224	80	1852 / 1853 / 1854	
21	STH100	00:0A:61-13:02:32	192.168.1.223	80	1852 / 1853 / 1854	
22	MR3105	00:0A:61-11:00:0C	192.168.1.222	80	1852 / 1853	Checking ip address ...
23	HDWC-B100	00:0A:61-13:02:65	192.168.0.99	80	1852 / 1853 / 1854	
24	STH100	00:0A:61-13:01:0C	192.168.0.207	80	1852 / 1853 / 1854	
25	STH100	00:0A:61-13:02:11	192.168.0.204	80	1852 / 1853 / 1854	
26	STH100	00:0A:61-13:02:45	192.168.0.203	80	1852 / 1853 / 1854	
27	STH100	00:0A:61-13:02:44	192.168.0.202	80	1852 / 1853 / 1854	
28	STH780	00:0A:61-13:04:56	192.168.0.190	80	1852 / 1853 / 1854	
29	STH900	00:0A:61-13:03:1C	192.168.0.180	80	1852 / 1853 / 1854	
30	STH900	00:0A:61-13:03:1B	192.168.0.179	80	1852 / 1853 / 1854	
31	STH900	00:0A:61-13:03:1A	192.168.0.178	80	1852 / 1853 / 1854	
32	STH900	00:0A:61-13:03:19	192.168.0.177	80	1852 / 1853 / 1854	
33	STH900	00:0A:61-13:03:18	192.168.0.176	80	1852 / 1853 / 1854	
34	STH900	00:0A:61-13:03:17	192.168.0.175	80	1852 / 1853 / 1854	
35	STH900	00:0A:61-13:03:1E	192.168.0.174	80	1852 / 1853 / 1854	
36	STH900	00:0A:61-13:01:0A	192.168.0.172	80	1852 / 1853 / 1854	
37	STH900	00:0A:61-13:09:C9	192.168.0.171	80	1852 / 1853 / 1854	
38	STH340	00:0A:61-13:04:5E	192.168.0.160	80	1852 / 1853 / 1854	
39	STH340	00:0A:61-13:04:5D	192.168.0.159	80	1852 / 1853 / 1854	
40	STH340	00:0A:61-13:04:5C	192.168.0.158	80	1852 / 1853 / 1854	
41	STH340	00:0A:61-13:04:5A	192.168.0.156	80	1852 / 1853 / 1854	
42	STH340	00:0A:61-13:04:59	192.168.0.155	80	1852 / 1853 / 1854	
43	STH340	00:0A:61-13:04:58	192.168.0.154	80	1852 / 1853 / 1854	

Local network info.

IP address : 192.168.10.223

Subnet mask : 255.255.255.0

Gateway : 192.168.1.4

DNS server : 168.126.63.1

NVT network info.

Network type

☒ Static ☐ DHCP ☐ PPPoE

Network setting

MAC address : 00:0A:61-11:00:0C

IP address : 192.168.1.222

Subnet mask : 255.255.255.0

Gateway : 192.168.1.4

DNS server : 168.126.63.1

Apply

< NVTManagement - 네트워크 설정 정보 변경 메시지 (state tab) >

The screenshot shows the NVTManagement application window. At the top, there are buttons for 'NVT Scan', 'Clear', 'Delete ARP table', 'NVT setting', and 'Firmware update'. Below these is a table listing various devices with columns for No., Model Name, MAC address, IP address, Web port, AV port, and State. The table contains 43 entries. On the right side, there are two panels: 'Local network info.' showing IP address, Subnet mask, Gateway, and DNS server; and 'NVT network info.' which includes 'Network type' (Static, DHCP, PPPoE) and 'Network setting' (MAC address, IP address, Subnet mask, Gateway, DNS server) with an 'Apply' button.

No.	Model Name	MAC address	IP address	Web port	AV port	State
1	HDWC-B100	00:0A:61-13:02:66	192.168.10.63	80	1852 / 1853 / 1854	
2	STH100	00:0A:61-13:02:43	192.168.10.54	80	1852 / 1853 / 1854	
3	STH100	00:0A:61-13:02:13	192.168.10.53	80	1852 / 1853 / 1854	
4	MR310	00:0A:61-0E:54:84	192.168.10.253	80	1852 / 1853 / 1854	
5	STH100	00:0A:61-13:02:1E	192.168.10.18	80	1852 / 1853 / 1854	
6	STH900	00:0A:61-13:01:26	192.168.10.115	80	1852 / 1853 / 1854	
7	MR780	00:0A:61-11:00:2F	192.168.1.86	80	1852 / 1853	
8	MR9005	00:0A:61-0E:0E:4F	192.168.1.83	80	1852 / 1853	
9	STH900	00:0A:61-13:01:7B	192.168.1.81	80	1852 / 1853 / 1854	
10	NV5-MR2DE1	00:0A:61-11:00:09	192.168.1.77	80	1852 / 1853	
11	STH900	00:0A:61-13:09:C3	192.168.1.62	80	1852 / 1853 / 1854	
12	STH600	00:0A:61-13:00:52	192.168.1.61	80	1852 / 1853 / 1854	
13	MRH100	00:0A:61-0E:21:88	192.168.1.58	80	1852 / 1853 / 1854	
14	HSDC-101NH	00:0A:61-0E:5F:6A	192.168.1.57	80	1852 / 1853 / 1854	
15	NV5-MRDE1	00:0A:61-12:12:BA	192.168.1.39	80	1852 / 1853	
16	STH340	00:0A:61-13:01:8C	192.168.1.229	80	1852 / 1853 / 1854	
17	HSDC-101NH	00:0A:61-0E:22:76	192.168.1.228	88	8852 / 8853 / 1854	
18	STH330	00:0A:61-02:15:19	192.168.1.226	86	6852 / 6853 / 1854	
19	STH340	00:0A:61-13:00:89	192.168.1.225	80	1852 / 1853 / 1854	
20	STH780	00:0A:61-13:01:7E	192.168.1.224	80	1852 / 1853 / 1854	
21	STH100	00:0A:61-13:02:32	192.168.1.223	80	1852 / 1853 / 1854	
22	MR3105	00:0A:61-11:00:0C	192.168.1.222	80	1852 / 1853	IP address has changed, IP ad..
23	HDWC-B100	00:0A:61-13:02:65	192.168.0.99	80	1852 / 1853 / 1854	
24	STH100	00:0A:61-13:01:0C	192.168.0.207	80	1852 / 1853 / 1854	
25	STH100	00:0A:61-13:02:11	192.168.0.204	80	1852 / 1853 / 1854	
26	STH100	00:0A:61-13:02:45	192.168.0.203	80	1852 / 1853 / 1854	
27	STH100	00:0A:61-13:02:44	192.168.0.202	80	1852 / 1853 / 1854	
28	STH780	00:0A:61-13:04:56	192.168.0.190	80	1852 / 1853 / 1854	
29	STH900	00:0A:61-13:03:1C	192.168.0.180	80	1852 / 1853 / 1854	
30	STH900	00:0A:61-13:03:1B	192.168.0.179	80	1852 / 1853 / 1854	
31	STH900	00:0A:61-13:03:1A	192.168.0.178	80	1852 / 1853 / 1854	
32	STH900	00:0A:61-13:03:19	192.168.0.177	80	1852 / 1853 / 1854	
33	STH900	00:0A:61-13:03:18	192.168.0.176	80	1852 / 1853 / 1854	
34	STH900	00:0A:61-13:03:17	192.168.0.175	80	1852 / 1853 / 1854	
35	STH900	00:0A:61-13:03:1E	192.168.0.174	80	1852 / 1853 / 1854	
36	STH900	00:0A:61-13:01:0A	192.168.0.172	80	1852 / 1853 / 1854	
37	STH900	00:0A:61-13:09:C9	192.168.0.171	80	1852 / 1853 / 1854	
38	STH340	00:0A:61-13:04:5E	192.168.0.160	80	1852 / 1853 / 1854	
39	STH340	00:0A:61-13:04:5D	192.168.0.159	80	1852 / 1853 / 1854	
40	STH340	00:0A:61-13:04:5C	192.168.0.158	80	1852 / 1853 / 1854	
41	STH340	00:0A:61-13:04:5A	192.168.0.156	80	1852 / 1853 / 1854	
42	STH340	00:0A:61-13:04:59	192.168.0.155	80	1852 / 1853 / 1854	
43	STH340	00:0A:61-13:04:58	192.168.0.154	80	1852 / 1853 / 1854	

**Local network info.**  
 IP address : 192.168.10.223  
 Subnet mask : 255.255.255.0  
 Gateway : 192.168.1.4  
 DNS server : 168.126.63.1

**NVT network info.**  
**Network type**  
☒ Static ☐ DHCP ☐ PPPoE  
**Network setting**  
 MAC address : 00:0A:61-11:00:0C  
 IP address : 192.168.1.222  
 Subnet mask : 255.255.255.0  
 Gateway : 192.168.1.4  
 DNS server : 168.126.63.1  
 Apply

< NVTManagement – 네트워크 설정 정보 변경 완료 메시지 >

“NVT setting” 버튼을 이용한 NVT 설정 일괄 변경은 제품 공급처를 통해 기술 지원을 받으시기 바랍니다.